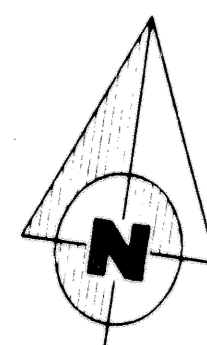


MIZNER ESTATES OF PALM BEACH POLO AND COUNTRY CLUB- WELLINGTON P.U.D.

IN SECTION 15, TOWNSHIP 44 SOUTH, RANGE 41 EAST
VILLAGE OF WELLINGTON, PALM BEACH COUNTY, FLORIDA
SEPTEMBER 1998
SHEET 3 OF 4 SHEETS

LEGEND:

- P.O.C. = POINT OF COMMENCEMENT
- P.O.B. = POINT OF BEGINNING
- P.B. = PLAT BOOK
- PG(S) = PAGE(S)
- P.R.M. = PERMANENT REFERENCE MONUMENT
- O.R.B. = OFFICIAL RECORD BOOK
- D.B. = DEED BOOK
- C. = CENTERLINE
- = DENOTES SET P.R.M. P.L.S. # 2297 UNLESS OTHERWISE NOTED
- = DENOTES FOUND P.R.M. AS NOTED
- SEC. = SECTION
- TWP. = TOWNSHIP
- RGE. = RANGE
- ▲ = PALM BEACH COUNTY SURVEY DEPARTMENT BRASS DISK IN CONCRETE
- = SET IRON ROD WITH L.B. #1376 CAP.
- = PERMANENT CONTROL POINT (P.C.P.) #2297
- Δ = CENTRAL ANGLE (DELTA)
- R. = RADIUS
- L. = LENGTH OF ARC
- R/W. = RIGHT OF WAY
- A.I.D. = ACME IMPROVEMENT DISTRICT
- RAD. = RADIAL
- L.B. = LICENSED BUSINESS



UNPLATTED

POLO CLUB ROAD-PLAT No.2
(PLAT BOOK 63, PAGE 82)

MATCH LINE

(OVERALL) 12' UTILITY EASEMENT

20' BUFFER TRACT 'A'

20' BUFFER TRACT 'B'

12' WATER AND SEWER EASEMENT

12' UTILITY EASEMENT

5' LIMITED ACCESS EASEMENT (TYP.)

20' LAKE MAINTENANCE EASEMENT (TYP.)

12' UTILITY EASEMENT

5' LIMITED ACCESS EASEMENT

12' WATER EASEMENT

20' LAKE MAINTENANCE EASEMENT (TYP.)

12' UTILITY EASEMENT

5' LIMITED ACCESS EASEMENT

12' WATER EASEMENT

20' LAKE MAINTENANCE EASEMENT (TYP.)

12' UTILITY EASEMENT

5' LIMITED ACCESS EASEMENT

12' WATER EASEMENT

20' LAKE MAINTENANCE EASEMENT (TYP.)

12' UTILITY EASEMENT

5' LIMITED ACCESS EASEMENT

12' WATER EASEMENT

20' LAKE MAINTENANCE EASEMENT (TYP.)

12' UTILITY EASEMENT

5' LIMITED ACCESS EASEMENT

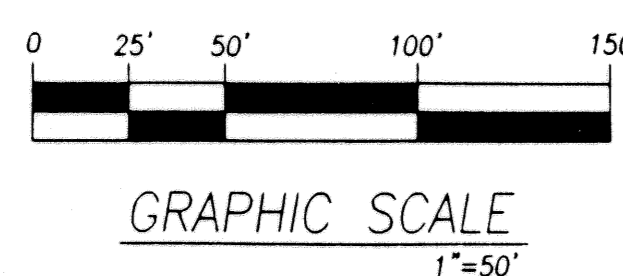
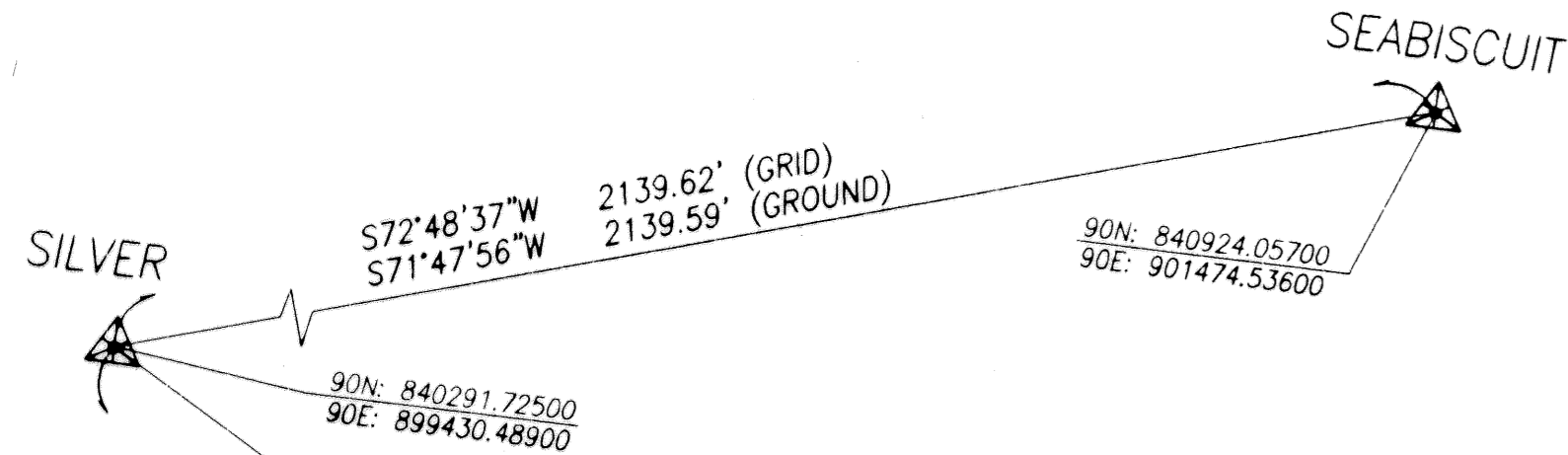
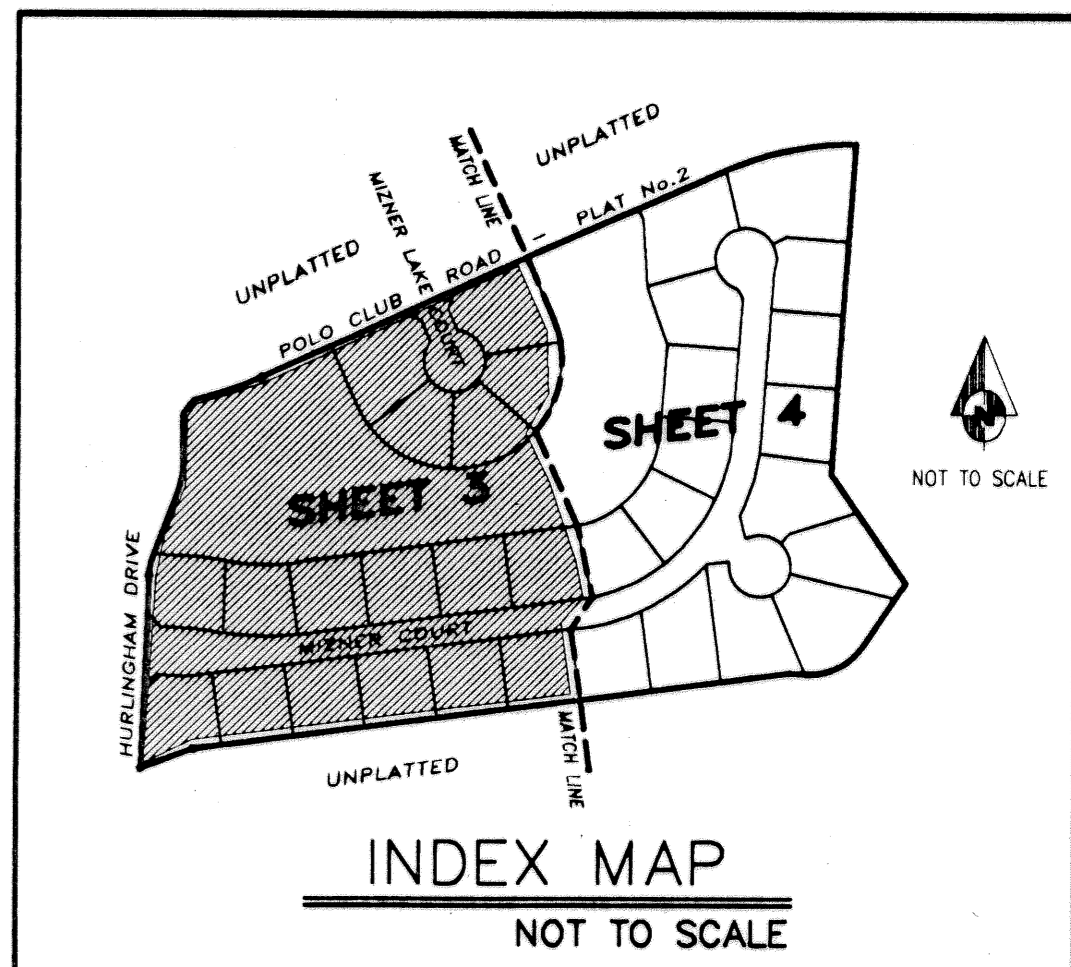
12' WATER EASEMENT

WATER MANAGEMENT TRACT

MIZNER WAY TRACT-A

UNPLATTED

MATCH LINE



Subdivision: Mizner Estates of Palm Beach Polo & Country Club
 Book: 67
 Page: 67
 Flood Map: 100B
 Zoning: PUD
 ZIP Code: 33414
 PUD Name: Wellington - PUD

Dailey-Fotony, inc.
 land surveyors - planners
 5050 10th Avenue North Suite A - Lake Worth FL 33463-2062
 Phone: 561-965-8787 Fax: 561-965-8983